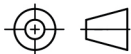


THIRD ANGLE PROJECTION

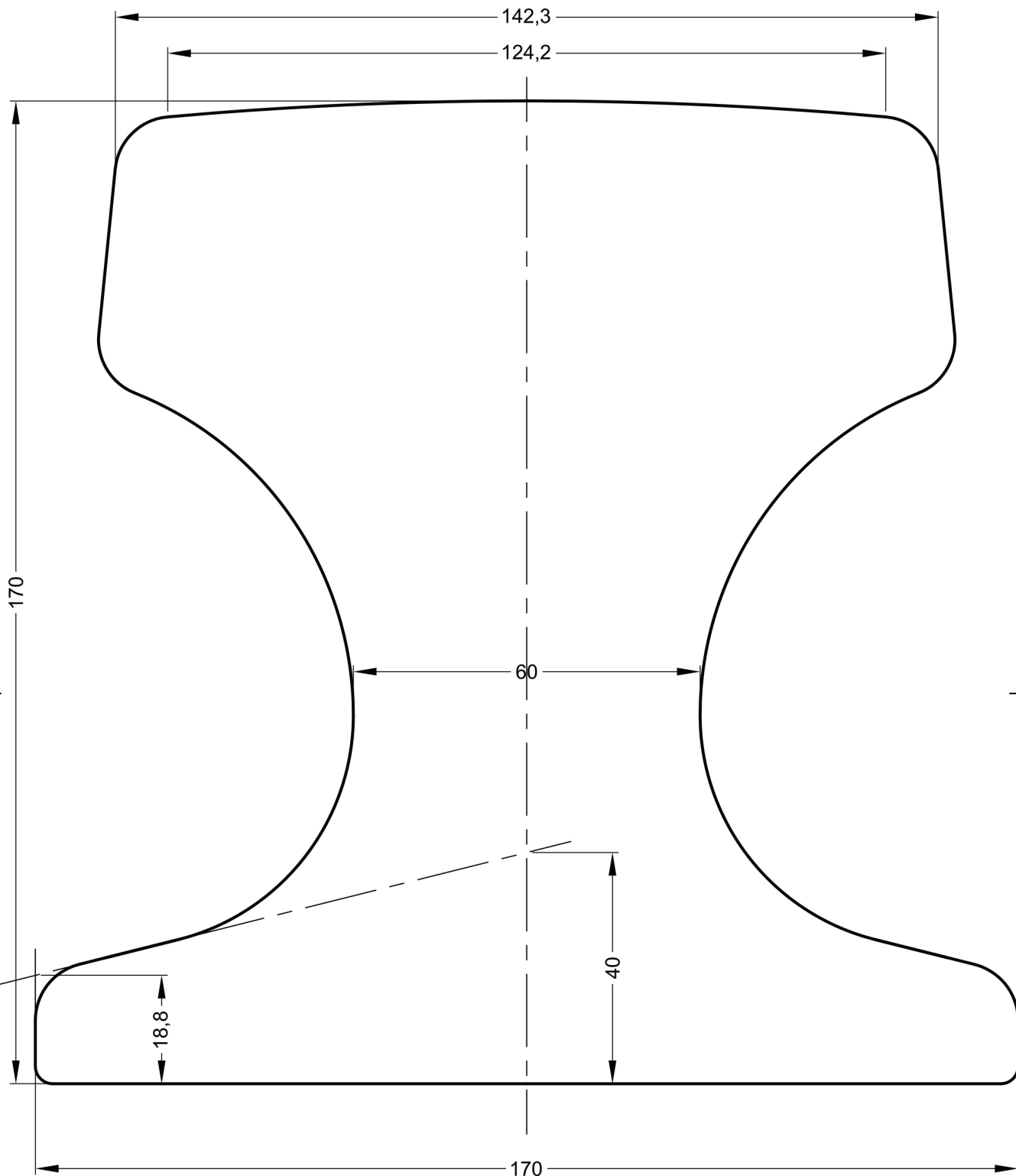


FOR GUIDANCE ONLY  
THIS INFORMATION HAS BEEN  
PROVIDED IN GOOD FAITH BUT  
SPECIFICATIONS DO CHANGE

Edition B

Date 06/07/10

Scale 1:1 @ A4



NOTE: THE PROPERTIES SPECIFIED BELOW HAVE BEEN CALCULATED USING AUTOCAD SOFTWARE AND ARE ACCURATE AT THE TIME OF THIS DRAWING ISSUE. THESE FIGURES MAY DIFFER SLIGHTLY FROM THOSE PUBLISHED IN THE STANDARD FOR THE RAIL.



**AGICO GROUP**

**Anyang General International  
Co., Ltd.**

Tel: +86 372 5081 703  
Email: info@rail-fastener.com  
http://www.rail-fastener.com

Rail Designation	ISCR 140		
Rail Origin	INDIA		
Standard	IS 3443-1980		
Area of section	18593mm <sup>2</sup>		
Calculated Mass	146 kg/m		
Neutral Axis to base	87.3 mm		
Moment of Inertia	Ixx	5520 cm <sup>4</sup>	Iyy 2570 cm <sup>4</sup>